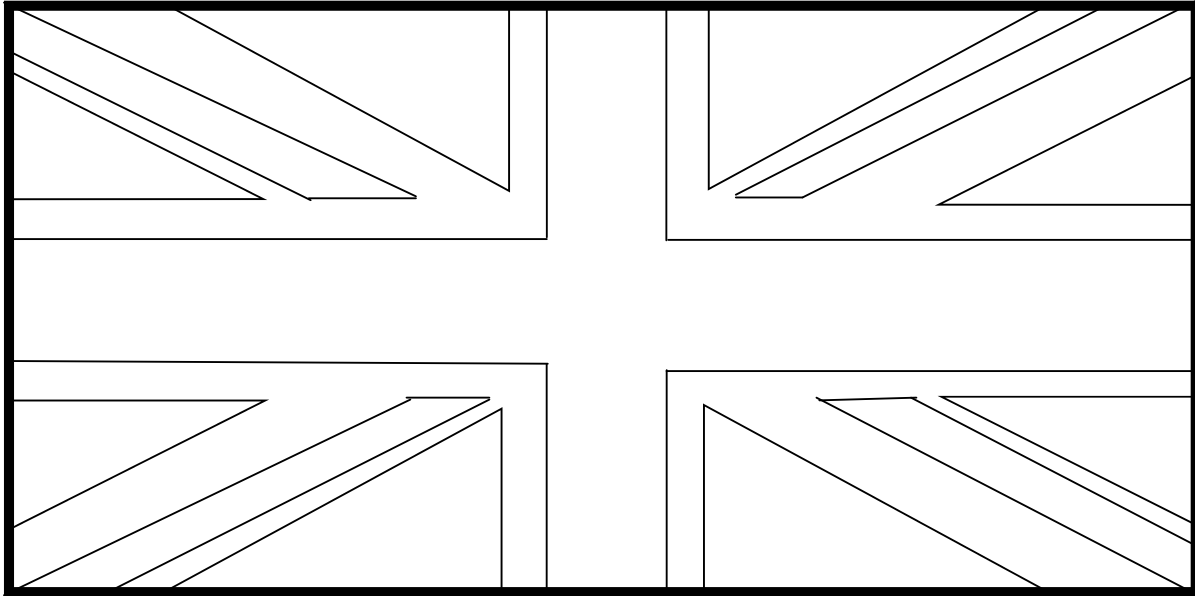
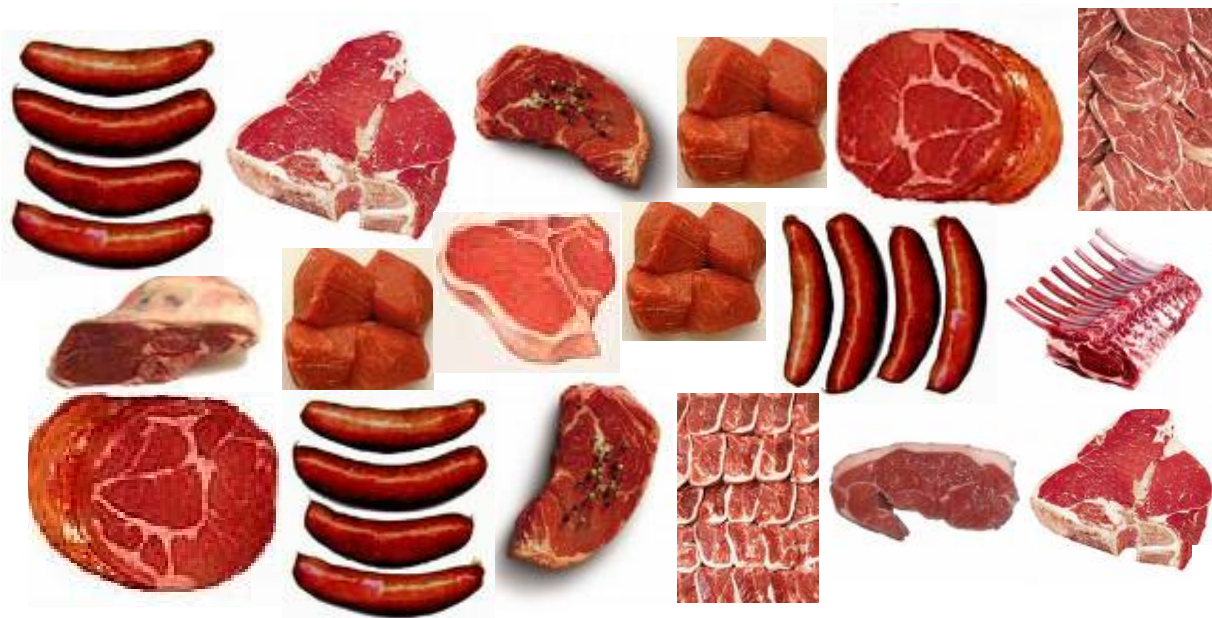


**THE GREAT BRITISH MEAT FLAG!**  
Cut out the ingredients and stick to  
the red stripes to make your own  
meaty 'Food Flag'! 

Colour the blue triangles in with a felt-tipped pen.



When you have finished your flag, you can cut it out  
and stick the edge to a straw with sticky tape.  
Use it to decorate a plant pot or your pencil pot!



Can you recognise any of the types and cuts of meat?  
There are pictures of pork, beef and lamb.

Which animals do each of these three meats come from?